



NEWSLETTER

January - August, 2012

A Semi-Annual Publication of the C. G. Jung Society of New Orleans

Vol. 21, No. 1

SOOTHING FURY

By Deedy Young

Aeschylus' "The Eumenides" portrays the survival instinct's fury when it is triggered by threats or by harm to our selves or loved ones. This is the type of fury experienced by many New Orleanians when poorly engineered levees gave way following Katrina.

Three of the play's characters, each a divinity in itself, correspond to different levels in the development of consciousness: the instinctual level is represented by the Furies; one-sided, rational consciousness by Apollo; and consciousness informed by the innate drive toward wholeness by Athena.

The process of conscious development begins when a child's budding consciousness must repress instinctual impulses if it is to emerge from the powerful unconscious. At the same time, such repression one-sidedly limits the conscious perspective. This approach tends to persist, as the play's character Apollo illustrates.

Orestes, the play's protagonist, complies with Apollo's demand that he murder his mother in revenge for killing his father. The Furies, intent on exacting blood for his crime of matricide, react by setting upon Orestes and driving him mad. Orestes then seeks Apollo's help, but, repulsed by the Furies, Apollo rejects them. In Apollo we see how one-sided consciousness strives to repress primal emotions. Think of reactions like "Get over it!" or "Deal with it!" or "What's wrong with me?"

Yet some emotions cannot be managed this way. Apollo divests Orestes of the Furies' madness, but, unable to dominate the Furies, he cannot purge Orestes of his guilt. With the energies of the instinctual psyche and rational consciousness at a standstill, the psyche's energy cannot progress, and Orestes experiences depression.

When Apollo realizes he cannot prevail, he sends Orestes on to Athena; the Furies follow, fiercely unrelenting.

In the play's portrayal of Athena, we see neither a vulnerable, budding consciousness nor a consciousness that is one-sidedly fixed on a rational viewpoint like Apollo's. Instead, Athena represents conscious awareness that is developed enough to tolerate the expression of primal urges without being overcome. She hears the Furies out, all the while retaining her ability to make distinctions and determine her perspective.

Athena reveals what is necessary to soothe the instinctual psyche's rage. Her respectful hearing of the Furies reflects the human need for a container within which we can tell our stories. Recounting difficult emotional experiences to friends can sometimes serve this need; at other times, a deeper exploration is required. In the manner of Athena, analysis or therapy can provide a secure container where fury may be eased by giving it expression, by exploring its meaning in an individual's life, and by considering its impact in terms of consequences and personal values.

Like Athena with the Furies, this vital work calls on us to "speak and let them speak" (James Hillman, *The Myth of Analysis*). As part of our human nature, instinctual rage cannot be repressed at times. If we allow its contained expression and give it reflective consideration, our fury may be soothed, and more: We may participate in creating a better integrated, more complete personality.

Deedy Young, LCSW, received her diploma from the Inter-Regional Society of Jungian Analysts in 2010.

She lives and works in Lafayette, Louisiana.

SIGN UP FOR THE JUNG SOCIETY'S NEW E-MAIL NEWSLETTER! SEE PAGE 5 FOR MORE INFORMATION.



C. G. JUNG SOCIETY OF NEW ORLEANS SPRING 2012 PROGRAM CALENDAR

“WINGS OF DESIRE”

DAN HARRIS

TUESDAY, JANUARY 10, 2012

6 PM SCREENING | 8:15 PM DISCUSSION

2 CEUs

“Wings of Desire” (1987) is a film that depicts angels as they move among mortals, the Berliners of the epoch before the Wall came down. These angels offer kindness to the most vulnerable among us. They are an invisible army that mark each other as they pass and reckon for whom they will bear witness and bring comfort. They betray the weariness and resignation of those whose mission it has been to perform these tasks every day, forever. Then, it begins to emerge, these angels need us as much as we need them. Wenders explores the archetypal world of man and angel, and, by inference, psyche and matter, body and soul.

Wim Wenders won the Best Director prize for this film at the 1987 Cannes Film Festival. He co-wrote this with playwright and novelist Peter Handke. It stars Bruno Ganz, Solveig Dommartin, and Otto Sander. Peter Falk plays himself, or, what you might have suspected, was himself. The cinematography is by Henri Alekan, who made Jean Cocteau’s “Beauty and the Beast” over four decades earlier. The film score is by Jurgen Knieper and includes a musical performance by the young-vintage Nick Cave. The music, the text, the visuals, the voices are all of a piece — inseparable, evocative, lyric, mesmerizing.

Dan Harris, an avid attendee of C. G. Jung Society of New Orleans programs over the years, is a local teacher of English as a second language. He led the 2008 program for the last film of Andrei Tarkovsky, “The Sacrifice.”

LOUISE BOURGEOIS AND THE ROLE OF ART IN HEALING TRAUMA

KAREN OSER EDMUNDS, MFA

TUESDAY, FEBRUARY 7, 2012

7:30 PM

2 CEUs

Louise Bourgeois was a renowned French-American artist whose influence is far reaching. She became the first woman to be honored with a major retrospective at New York’s Museum of Modern Art. Locally, her large-scale spider piece stands in The Besthoff Sculpture Garden in City Park and her huge lighted sculpture of eyes in Lafayette Square made front page news in the *Times Picayune* when it was vandalized and its copper parts stolen. Bourgeois died in May 2010 at the age of 98 and continues to be a powerful international influence on legions of artists.

This talk will present a focused glimpse of the artwork of Bourgeois in the context of healing. The lifelong themes of Bourgeois, anxiety and betrayal, were mined in her artwork, using her personal experience of childhood trauma, which arose from the discovery that her governess was also her father’s mistress.

Karen Oser Edmunds, MFA, is a native New Orleanian whose mixed media works range from small collages on paper, monotypes, and intimate, miniature sculptures to large-scale installations. They have been shown in New Orleans as well as nationally, most recently in Tennessee, New Jersey, and Maine. The healing aspects of art-making underscore most of her work. Edmunds earned an MFA in Visual Art from Vermont College in 2005 and her undergraduate degree in psychology from H. Sophie Newcomb College (1967). She spent a year at the University of Paris studying art and psychology. In addition to Louise Bourgeois, Edmunds has lectured on the ecological effects of consumerism and the personal trauma and loss wrought by Hurricane Katrina.

EVENING PROGRAMS FREE TO MEMBERS, \$10 NONMEMBERS
THE JUNG SOCIETY IS A PRE-APPROVED NATIONAL
BOARD OF CERTIFIED COUNSELORS CEU PROVIDER

SATURDAY WORKSHOPS BY ADMISSION
PROGRAMS HELD AT PARKER METHODIST CHURCH
1130 NASHVILLE AVENUE (AT PERRIER), NEW ORLEANS

SEARCHING FOR ONE'S SPIRIT: CARING FOR ONE'S SOUL
KAREN MAGEE, MA, LMFT, LPC
FRIDAY, MARCH 9, 2012
7:30 PM | 2 CEUs

If we were to speak about a search for spirit, what would we mean? What does such a search look like? When, where, and how might it begin? During any one phase of life, or over an entire lifetime, what is it in an individual's life, or the life of one's surrounding community, that creates and supports a space for this spirit to be discovered? (And, as well, what could stand in the way of such a discovery?) Eventually, as the individual—perhaps with others beside them, discovers a pathway to spirit, in almost that same breath, might we imagine and even see that the soul feels nourished and cared for again?

Using film clips and comments from Carl Jung and other wise figures as our guides, the evening lecture will invite a glimpse into another world and its people, a world where spirits have needed to be fed, and souls have longed to be replenished. By way of the film work and lecture, as well as discussion, there will be an invitation for all to learn more about what it means to consciously seek and care for a meaningful relationship to one's own spirit and soul, and to the imagined and known presence of spirit and soul in one's life.

Karen Magee, MA, LMFT, LPC is a Jungian analyst in private practice in Houston, working in-depth with individuals, couples, and occasionally families. Following her graduate work in family systems, she trained with the Inter-Regional Society of Jungian Analysts, where she recently completed four years as the national Ethics Chair and serves as a senior training analyst for the Texas Seminar, an arm of the Inter-Regional. For more than 20 years, she has been an instructor at the Houston Jung Center and is known for her work with ethics and using film as a lens for psychological exploration. Karen lectures and presents workshops locally and nationally. For many years, New Orleans was her home.

ETHICS: A SEARCH FOR LIGHT IN THE SHADOWS — A STORY'S FINAL CHAPTER
A WORKSHOP WITH KAREN MAGEE, MA, LMFT, LPC
SATURDAY, MARCH 10, 2012 | 9 AM - 1 PM
\$35 MEMBERS | \$45 NONMEMBERS
3.5 CEUs FOR SOCIAL WORKERS AND LICENSED PROFESSIONAL COUNSELORS*

What is it about a particular situation in our professional work and daily lives that leaves something or someone difficult to understand and challenging to respond to, respectfully and ethically? In such situations and relationships of life, is there something within each of us that guides us? If there is, from where does this guiding source originate? Might it be that in such struggles (especially when ethical), are we likely to find this source hiding in an unconscious, unacknowledged aspect of our lives and psyches that prevents us from seeing clearly and with less judgment, the world around us and its people? Thus, as we seek understanding and acceptance of our own stories, as well as our psychologies and wounds, is it possible that ethical, guiding principles emerge . . . not as rules imposed from without, but as guiding lights from within?

Using lecture, film, individual and group exercises, as well as discussion, the ground for our psychological and ethical exploration will focus on one man's life, a life now approaching its final chapter. In a story for our times, and perhaps for each one of us, an unexpected, unwanted invitation arrives. In the end, the invitation is responded to with a consciously considered choice, one some among us might characterize as ethical. The choice, once made, reshapes the story of this individual's life and the legacy left for the world that surrounded him. In his final chapter of life, perhaps wounds are healed and a wholeness is achieved.

** This program was approved for 3.5 Clinical hours of continuing education credit by the National Association of Social Workers—Louisiana Chapter as authorized by the Louisiana State Board of Social Work Examiners. The C. G. Jung Society of New Orleans is an approved provider of the National Board of Certified Counselors.*

Karen Magee, MA, LMFT, LPC is a Jungian analyst in private practice in Houston, working in-depth with individuals, couples and occasionally families. Following her graduate work in family systems, she trained with the Inter-Regional Society of Jungian Analysts, where she recently completed four years as the national Ethics Chair and serves as a senior training analyst for the Texas Seminar, an arm of the Inter-Regional. For more than 20 years, she has been an instructor at the Houston Jung Center and is known for her work with ethics and using film as a lens for psychological exploration. (The Saturday workshop will include work with film.) Karen lectures and presents workshops locally and nationally. For many years, New Orleans was her home.

A PRIEST, AN ATHEIST, AND CARL JUNG WALK INTO A BAR
DELDON ANNE MCNEELY, PH.D.
TUESDAY, APRIL 3, 2012
7:30 PM
2 CEUs

Jung proposed that human nature is instinctively receptive to spirituality, sometimes referred to as a “religious instinct.” The failure of our materialistic age to support transpersonal principles resulted, thought Jung, in great suffering and frustrated longing for spirit. As militant atheism becomes increasingly vocal and popular, how does Jung’s proposal stand today? Is there evidence of Jung’s proposal, which Jung claimed was his empirical observation? Did he, as some think, give us the beginnings of a new myth or religion that is more meaningful for our time? This lecture will consider some perspectives on the possibility that we are, or are not, each subject to innate, spiritual motives.

Deldon Anne McNeely received her Ph.D. in Clinical Psychology from Louisiana State University and is a member of the International Association for Analytical Psychology. A senior analyst of the Inter-Regional Society of Jungian Analysts, she is a training analyst for their New Orleans Jungian Seminar. Publications include *Touching: Body Therapy and Depth Psychology*; *Animus Aeternus: Exploring the Inner Masculine*; *Mercury Rising: Women, Evil, and the Trickster Gods*; and *Becoming: An Introduction to Jung’s Concept of Individuation*.

THE EPIC OF EVOLUTION: OUR 21ST-CENTURY MYTHIC STORY
KATHLEEN O’GORMAN, PH.D.
TUESDAY, MAY 1, 2012
7:30 PM
2 CEUs

What is an epic? A larger than life story ... the identity of a particular people ... a vision of destiny and transcendence.

Looking back over human history we find a tapestry of mythic stories that seek to give a coherent answer to fundamental questions like: How did we come to be here? How do we live and what is our role in the larger picture? And what happens when we die?

What associations does an epic evoke? What epics inspire you? Do some research into the epics that have guided and inspired humans over the millennia. Bring your understandings to our meeting on May 1st. And we will share them and explore the emergent epic story of our times.

Kathleen O’Gorman, Ed. D., is Associate Professor of Religion and Education, teaching graduate courses in religious education, religion, and ecology, as well as the integrative capstone course in Loyola’s Institute for Ministry. A former Sister, she holds a Doctorate in Religion and Education from Teachers College Columbia University (1986) and her Masters in Religious Education (1978) from Loyola.

JUNGIAN DREAM & STUDY GROUPS

MANDEVILLE DREAM GROUP

Mandeville dream group with analyst Connie Romero: This is an ongoing group that meets monthly on Sunday afternoons from 4 - 6. For more information, contact Connie Romero (985-778-1641 | romeroce4@aol.com).

JUNGIAN READING GROUP, NEW ORLEANS

Analyst Del McNeely's monthly Jungian study group is currently reading her book, *Becoming: An Introduction to Jung's Concept of Individuation*. The group usually meets one Monday per month from 12:30 pm – 2:30 pm at Parker, and drop-ins interested in discussions covering individuation and other psychological, philosophical, and religious topics are welcome! For more information, contact Del McNeely (985-875-7363 | earthlovr@earthlink.net).

VIRTUAL NEWS

Due to rising costs, the Jung Society has changed our newsletter mailing process. Individuals have the option of receiving the twice-yearly newsletter by e-mail or by postal mail. Jung Society members will be eligible to receive both the electronic and hard copy newsletter at no charge; just let us know your preference, and be sure we have your current mail and/or e-mail address.

We hope non-members will stay abreast of our program offerings as well, either by providing us your e-mail address and receiving your free pdf newsletter, or by “subscribing” to the mail version at a nominal \$5 per year charge to cover printing and mailing costs. Just send in or drop off the coupon on page 7, or let us know your preferences at our next meeting. And remember to check our website at www.jungneworleans.org for up-to-date program listings.

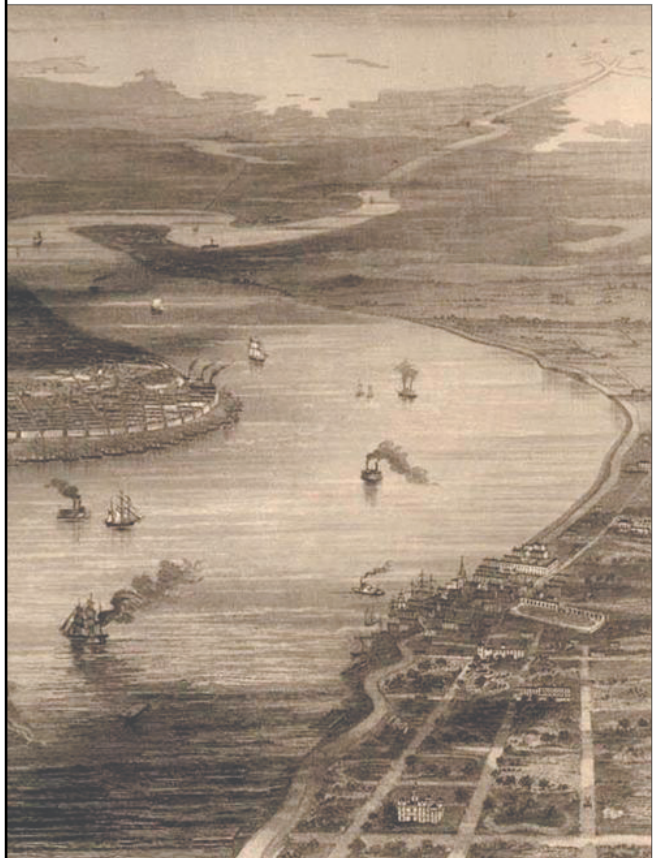
A copy of the newsletter can always be downloaded from our website at www.jungneworleans.org/newsletter.pdf

POEM FOR NEW ORLEANS

Deedy Young

Rising out of lowland swamps
by the Mississippi River's endless rush of water,
New Orleans reclines in an elemental embrace.
Her cityscape climbs skyward into air so burdened with moisture
the river itself seems bound for heaven.
Beneath her, all around her,
earth, wind, marsh, water
synchronize the city's heartbeat with natural rhythms
that pulse their way into her music,
Professor Longhair, Dr. John, Neville Brothers, Tipitina's;
her food, gumbo, crab cakes, catfish courtbouillon, red beans and rice;
her easy street slang, *Hey Boo! Ha ya do?*
The city's kinship with nature kindles an affinity with *prima materia*,
with wildness that's not rebuffed, but welcomed,
with what's desirable, and undesirable, dark, and even dangerous.
She holds fast to disquieting knowledge acquired firsthand,
of instincts as both unbounded destructiveness
and the “living fountain of creative impulse;”
instincts as wounder and healer
that lie, like Hermes' entwined snakes,
perilously close to one another.

*Jung, C.G., CW VIII, par. 339



The SACRED ROUND

*Mandalas by the
Patients of Carl Jung*



FEBRUARY 5 - MAY 6

THE SACRED ROUND: MANDALAS BY THE PATIENTS OF CARL JUNG

Oglethorpe University Museum of Art in Atlanta will present an exhibit entitled "The Sacred Round: Mandalas by the Patients of Carl Jung," which will be on display from February 5 to May 6, 2012, at the museum at 4484 Peachtree Rd. NE, Atlanta. Forty mandalas created by Jung's patients, along with comments exploring their symbolism and the creative analytical process, will be on display.

The museum is also producing a catalog containing reproductions of the images as well as articles by Jungian analysts Vicente de Moura (archivist of the C. G. Jung Institute in Zurich), James Hollis, William Willeford, and Jutta von Buchholtz of the New Orleans Jungian Seminar, who was instrumental in coordinating the exhibit of mandalas from the archives of the C. G. Jung Institute in Zurich.

For more information on the exhibit, contact the museum at 404-364-8555 or on the web at <http://museum.oglethorpe.edu>.

BOARD OF DIRECTORS

Susan Welsh, President
Toni Newton, Vice President
Sharon Orgeron, Secretary
Karen Farley, Treasurer
Helen Barnett
Michael Barry
Beatriz "Soco" Ocampo
Duane Page
Jennifer Standish
Rosanne Tarantolo
Terence Todd, SJ

HONORARY MEMBERS

Judy Andry
Susan Sewell Bell
Joan Bicocchi
Nancy Cater
Gayonne Goodyear
Blanche Gray
Susan Logan
Marilyn Marshall
Bob Welch

IN MEMORIAM

Ian Baker (1931 - 2006)
Battle Bell, III (1945 - 2006)
Stephanie Thibodeaux
Braedt (1951 - 2005)
Eda Galtney (1938 - 2002)
Faye Geraci (2007)
Andy Goodyear (1939 - 2001)
Joan & Travis Harrison (2007)

BENEFACTORS (\$100 level)

Roman A. Alvarez and
Rob Griffith
Allain and Judy Andry
Helen Barnett
Rebecca Deano
Margaret Dozier
Marilyn Marshall
Charlotte Mathes
Eben McClenahan
Everett McLaren
Deldon Anne McNeely
Toni Newton
Beatriz "Soco" Ocampo
Anthony H. Oglesby
Jennifer Standish
Rosanne Tarantolo
Anne Travis

BOLLINGEN (\$250 level)

Karen Edmunds
Blanche and Mat Gray
Duane and John Page
Susan Welsh

KÜSNACHT (\$500 level)

Karen Farley
Constance and David Romero
Elizabeth Romero
Thomas Welsh

\$1,000 LEVEL

The Fertel Foundation
Randy Fertel

NEW ORLEANS JUNGIAN SEMINAR ANALYSTS

Jutta von Buchholtz, LPC, Ph.D.
Baton Rouge & Birmingham | www.juttavonbuchholtz.com
VonBuchholtz@aol.com | 205-591-6688

Margaret F. Dozier, M.D.
Loxley, Alabama | kisthene@gulftel.com | 251-945-1155

Karen Gibson, LCSW, Ph.D.
New Orleans | kgibson@jphsa.org | 504-821-5567

Lucie Magnus, M.A., LPC, MFT
Birmingham | LexaMagnus@aol.com | 205-870-7510

Marilyn Marshall, M.A., LPC
New Orleans | marilynmarshall@gmail.com | 504-236-0735

Charlotte Mathes, LCSW, Ph.D.
Baton Rouge | www.charlottesmathes.com
mathes7@cox.net | 225-324-0668

Everett McLaren, Ed.D.
Richmond | egmclaren@earthlink.net | 804-288-6734

Deldon Anne McNeely, Ph.D.
Abita Springs
earthlovr@earthlink.net | 985-875-7363

Connie Romero, LPC, LMFT
Mandeville | romeroce4@aol.com | 985-778-1641

David E. Schoen, LCSW, MSSW
Covington | davidschoen60@yahoo.com | 985-892-9545

Jacqueline Wright, Ed.D.
Atlanta | jacquiewright1@gmail.com | 404-327-6002

Deedy Young, LCSW, MSW
Lafayette | ddyoung100@aol.com | 337-981-9601



ETHICS: A SEARCH FOR LIGHT IN THE SHADOWS—A STORY'S FINAL CHAPTER
KAREN MAGEE, MA, LMFT, LPC, JUNGIAN ANALYST
SATURDAY, MARCH 10, 2012
9 AM - 1 PM :: 3.5 CEUs

- *The Jung Society is a Pre-approved National Board of Certified Counselors CEU Provider*
- *This program was approved for 3.5 Clinical hours of continuing education credit by the National Association of Social Workers—Louisiana Chapter as authorized by the Louisiana State Board of Social Work Examiners.*

What is it about a particular situation in our professional work and daily lives that leaves something or someone difficult to understand and challenging to respond to, respectfully and ethically? In such situations and relationships of life, is there something within each of us that guides us? If there is, from where does this guiding source originate? Might it be that in such struggles (especially when ethical), are we likely to find this source hiding in an unconscious, unacknowledged aspect of our lives and psyches that prevents us from seeing clearly and with less judgment, the world around us and its people? Thus, as we seek understanding and acceptance of our own stories, as well as our psychologies and wounds, is it possible that ethical, guiding principles emerge ... not as rules imposed from without, but as guiding lights from within?

Using lecture, film, individual and group exercises, as well as discussion, the ground for our psychological and ethical exploration will focus on one man's life, a life now approaching its final chapter. In a story for our times, and perhaps for each one of us, an unexpected, unwanted invitation arrives. In the end, the invitation is responded to with a consciously considered choice, one some among us might characterize as ethical. The choice, once made, reshapes the story of this individual's life and the legacy left for the world that surrounded him. In his final chapter of life, perhaps wounds are healed and a wholeness is achieved.

Karen Magee, MA, LMFT, LPC is a Jungian analyst in private practice in Houston, working in-depth with individuals, couples and occasionally families. Following her graduate work in family systems, she trained with the Inter-Regional Society of Jungian Analysts, where she recently completed four years as the national Ethics Chair and serves as a senior training analyst for the Texas Seminar, an arm of the Inter-Regional. For more than 20 years, she has been an instructor at the Houston Jung Center and is known for her work with ethics and using film as a lens for psychological exploration. (The workshop will include work with film.) Karen lectures and presents workshops locally and nationally. For many years, New Orleans was her home.

WORKSHOPS, MEMBERSHIP, & SUBSCRIPTIONS

Name _____

Address _____

City _____ State _____ Zip _____

Phone _____ E-Mail _____

Workshop Location:
Parker Methodist Church
1130 Nashville Avenue
New Orleans, Louisiana

A Pre-Approved National
Board of Certified
Counselors CEU Provider

Total
Enclosed _____

☐ **ETHICS: A SEARCH FOR LIGHT IN THE SHADOWS**

Karen Magee, MA, LMFT, LPC, March 10, 2012
3.5 CEUs for social workers & LPCs
(Circle One: \$35 members; \$45 nonmembers)

☐ **MEMBERSHIP IN THE C. G. JUNG
SOCIETY OF NEW ORLEANS**

Donor Levels (Circle One)

Individual	\$ 50	Benefactor	\$100
Student	\$ 25	Bollingen	\$250
Clergy	\$ 25	Küsnacht	\$500

☐ **NONMEMBER SUBSCRIPTION TO THE
BIANNUAL JUNG SOCIETY NEWSLETTER AT
\$5 PER YEAR (e-mail subscription: no charge)**



**Free admission to monthly
programs and discounted
admission to workshops
throughout the year!**

Questions?

Contact the C. G. Jung Society:
E-mail info@jungneworleans.org
Website www.jungneworleans.org

Mail completed form to:

C. G. Jung Society of New Orleans
609 Metairie Road, #171
Metairie, LA 70005



**C. G. JUNG SOCIETY OF NEW ORLEANS
SPRING 2012 PROGRAM CALENDAR**

1/10/12	"WINGS OF DESIRE" DAN HARRIS 6 pm - film screening 8:15 pm - discussion 2 CEUs	3/10/12	ETHICS: A SEARCH FOR LIGHT IN THE SHADOWS KAREN MAGEE, MA, LMFT, LPC 9 am - 1 pm 3.5 CEUs \$35 members \$45 nonmembers
2/7/12	LOUISE BOURGEOIS AND THE ROLE OF ART IN HEALING TRAUMA KAREN EDMUNDS, MFA 7:30 pm 2 CEUs	4/3/12	A PRIEST, AN ATHEIST, AND CARL JUNG WALK INTO A BAR DELDON ANNE MCNEELY, PH.D. 7:30 pm 2 CEUs
3/9/12	SEARCHING FOR ONE'S SPIRIT: CARING FOR ONE'S SOUL KAREN MAGEE, MA, LMFT, LPC 7:30 pm 2 CEUs	5/1/12	THE EPIC OF EVOLUTION: OUR 21ST-CENTURY MYTHIC STORY KATHLEEN O'GORMAN, PH.D. 7:30 pm 2 CEUs

**EVENING PROGRAMS FREE TO MEMBERS, \$10 NONMEMBERS
SATURDAY WORKSHOP BY ADMISSION
THE JUNG SOCIETY IS A PRE-APPROVED NATIONAL
BOARD OF CERTIFIED COUNSELORS CEU PROVIDER**

**ALL PROGRAMS OPEN TO THE PUBLIC & HELD AT
PARKER MEMORIAL UNITED METHODIST CHURCH
1130 NASHVILLE AVENUE, NEW ORLEANS
WEBSITE WWW.JUNGNEWORLEANS.ORG**

